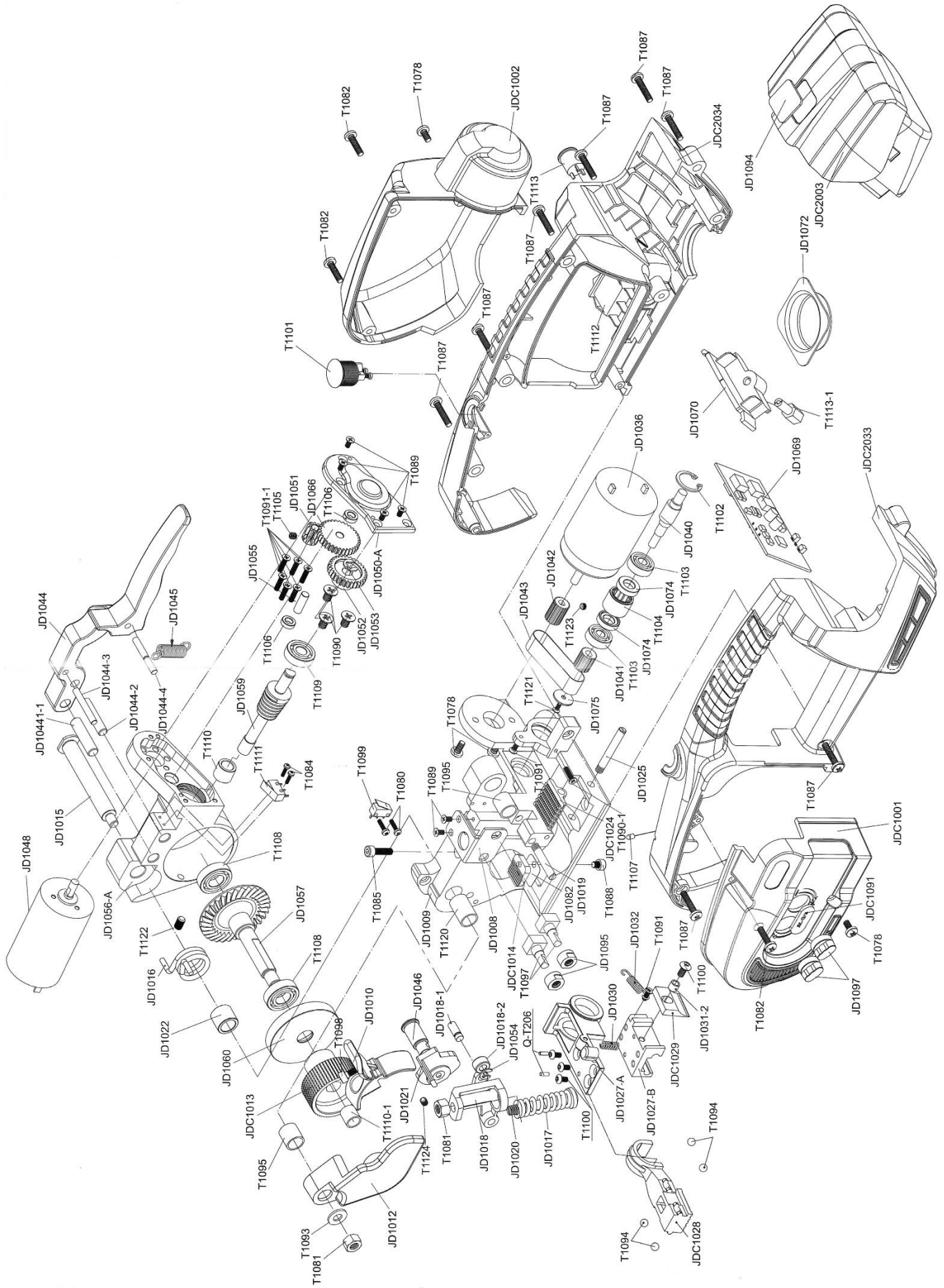


АККУМУЛЯТОРНЫЙ СТРЕПИНГ ИНСТРУМЕНТ

серии **JDC 16**





№.	НАИМЕНОВАНИЕ	КОД ДЕТАЛИ	КОЛ-ВО
1	Left panel cover	JDC1001	1
2	Right panel cover	JDC1002	1
3	Battery box cover	JDC2003-1	1
4	Battery box	JDC2003-2	1
5	Plug-in press plate	JDC1003-3	1
6	Battery box assembly	JDC2003	1
7	Left panel	JD1012	1
8	Tensioning wheel	JDC1013	1
9	Tensioned toothed plate	JDC1014	1
10	Welded toothed plate	JDC1024	1
11	Sliding toothed block	JDC1028	1
12	Cutter	JDC1029	1
13	Left shell	JDC2033	1
14	Right shell	JDC2034	1
15	Batteries	JDC2084	2
16	Welding button	JDC1010	1
17	Handle	JDC1044	1
18	Base	JD1009	1
19	Connecting shaft	JD1015	1
20	Connecting shaft spring	JD1016	1
21	Welding stand spring	JD1017	1
22	Welding stand	JD1018	1
23	Stand roller shaft pin	JD1018-1	1
24	Stand roller shaft	JD1018-2	1
25	Locating pin of welding stand	JD1019	1
26	Welding fulcrum shaft	JD1020	1
27	Welding lock block	JD1021	1
28	Spring fixed collar	JD1022	1
29	Set screws pin of welding lower toothed plate	JD1025	1
30	Welding framework	JD1027-A	1
31	Sliding chute framework	JD1027-B	1
32	Cutter spring 13	JD1030	1
33	Cutter spring 16	JD1030-1	1
34	Cutterfixed screw assembly	JD1031	1
35	Cutter bush	JD1031-2	1
36	Tension spring of sliding chute framework	JD1032	1
37	Welding motor	JD1036	1
38	Eccentric shaft	JD1040	1
39	Eccentric shaft belt pulley	JD1041	1
40	Motor belt pulley	JD1042	1
41	Transmission belt	JD1043	1
42	Handle steady pin 1	JD1044-1	1

№.	НАИМЕНОВАНИЕ	КОД ДЕТАЛИ	КОЛ-ВО
43	Handle steady pin 2	JD1044-2	1
44	Handle touching pin	JD1044-3	1
45	Handle spring pin	JD1044-4	1
46	Handle spring	JD1045	1
47	Fixed pin of welding lock block	JD1046	1
48	Tensioning motor	JD1048	1
49	A Cover plate of gear case	JD1050-A	1
50	Driving gear	JD1051	1
51	Gear on worm	JD1052	1
52	Split washer $\Phi 5$	JD1053	1
53	Split washer $\Phi 4$	JD1054	1
54	Driven gear shaft	JD1055	1
55	Reducer casing	JD1056-A	1
56	Turbine	JD1057	1
57	Worm	JD1059	1
58	Bearing cap of reducer casing	JD1060	1
59	Driven gear	JD1066	1
60	Circuit board	JD1069-1	1
61	Cell spile assembly	JD1070	1
62	Battery insert	JD1070-1	2
63	Battery board	JD1070-2	1
64	Anticollision wear-resisting block	JD1072	1
65	Fixed block of steel ball	JD1073	2
66	Eccentric shaft spacer	JD1074	2
67	Belt pulley spacer	JD1075	1
68	Tensioning spacer	JD1082	5
69	Battery Charger	JD1085	1
70	Potentiometer nut	JD1095	2
71	Rotary knob	JD1097	2
72	Tag used for JD lithium battery	JD1099	1
73	Cylindrical pin $\Phi 3 \times 8$	Q-T206	2
74	Galvanized cross half screw M4X8	T1078	4
75	Chroming cross screw M4X10	T1079	1
76	Black cross half screw M2.5X10	T1080	2
77	Lock nut M6 galvanizing	T1081	2
78	Cross pan head BT type screw M4X16	T1082	4
79	Galvanized self-tapping screw M3X10	T1083	4
80	Black half screw M2X8	T1084	5
81	Black hexagon screw M4X15	T1085	1
82	Black hexagon screw M4X4	T1088	1
83	Black cross countersunk screw M3X6	T1089	6
84	Black cross countersunk screw M5X10	T1090	3

№.	НАИМЕНОВАНИЕ	КОД ДЕТАЛИ	КОЛ-ВО
85	Black cross screw M3X12	T1090-1	1
86	Black cross screw M3X8	T1091	4
87	Black cross screw M3X10	T1091-1	7
88	Flat gasket Φ6		2
89	Steel ball Φ5	T1094	4
90	Composite bearing 12X10X12	T1095	2
91	Potentiometer	T1097	2
92	Black hexagon socket screw M4X8	T1098	1
93	Welding switch	T1099	1
94	Black inner hexagon screw M4X8	T1100	3
95	Tensioning button	T1101	1
96	Inner snap ring Φ17	T1102	1
97	Change 606 bearing	T1103	2
98	Needle bearing NK10/12	T1104	1
99	Black set screw M4*4	T1105	5
100	Driven gear bearing WML-5009-2Z	T1106	2
101	Indicator light	T1107	1
102	Reducer casing bearing 6900	T1108	2
103	Worm front bearing 607zz	T1109	1
104	Worm back bearing BK0810	TWO	1
105	Oil bearing	T1110-1	1
106	Tape rewind micro switch D2F-01 FL	T1111	1
107	Power switch rocker switch KOD3	T1112	1
108	Battery charging socket DC5.5*2.1 mm	T1113	1
109	Black cross screw M2.5X8	T1121	1
110	Black set screw M5*8	T1122	1
111	Black set screw M4*3	T1123	2
112	Black set screw M4*5	T1124	1