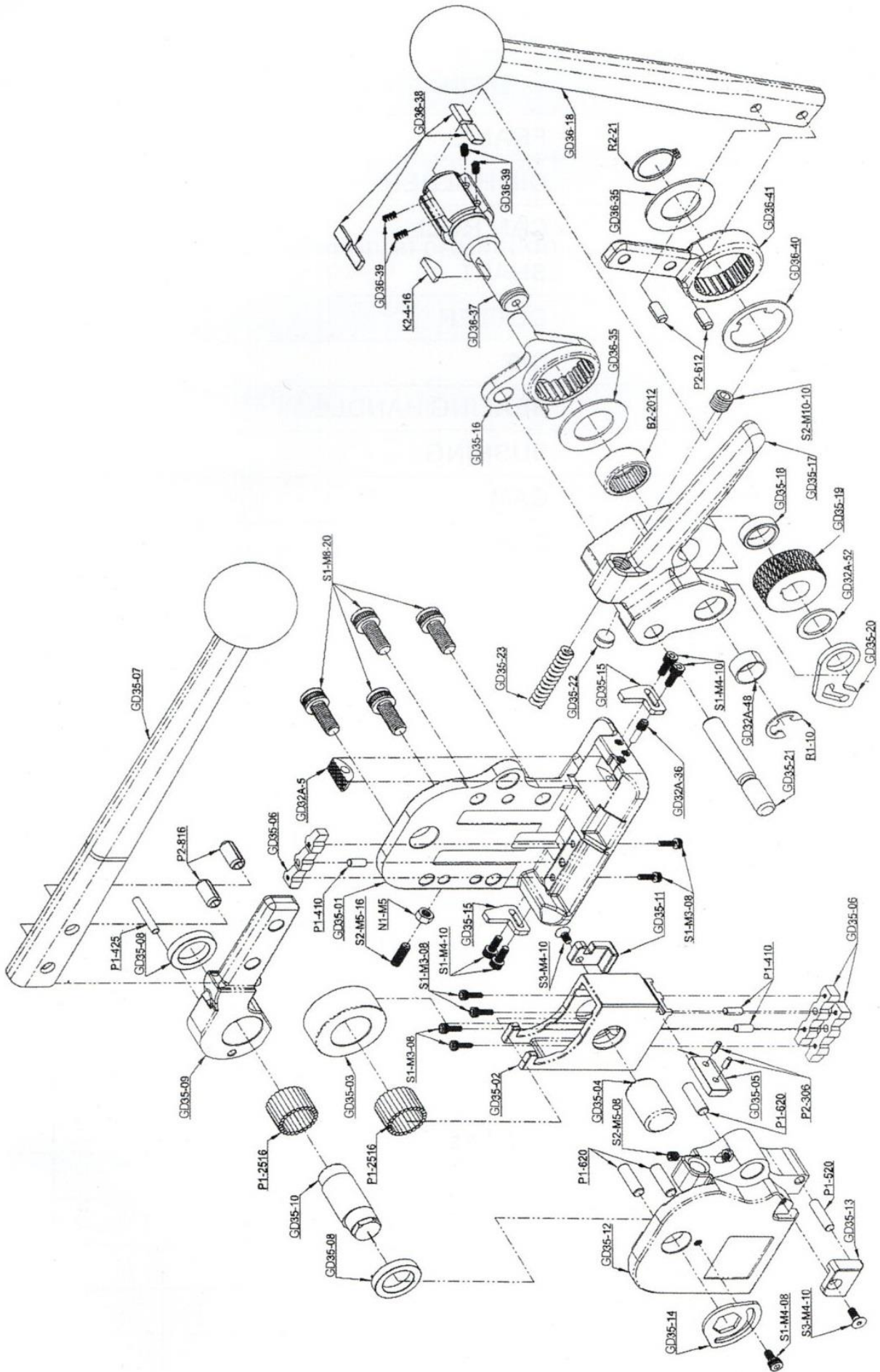


КОМБИНИРОВАННЫЙ СТРЕПШИНГ
ИНСТРУМЕНТ ДЛЯ СТАЛЬНОЙ ЛЕНТЫ
серии **GD35**





№.	НАИМЕНОВАНИЕ	КОД ДЕТАЛИ	КОЛ-ВО
1	FRAME	GD35-01	1
2	DIE HOLDER	GD35-02	1
3	CAM ROLL	GD35-03	1
4	SHAFT	GD35-04	1
5	CUTTER	GD35-05	1
6	DIE	GD35-06	3
7	SEALING HANDLE	GD35-07	1
8	BUSHING	GD35-08	1
9	CAM	GD35-09	2
10	SHAFT	GD35-10	1
11	EJECTOR	GD35-11	1
12	SIDE COVER	GD35-12	1
13	COVER	GD35-13	1
14	ADJUSTMENT PLATE	GD35-14	1
15	STRAP STOP	GD35-15	2
16	RETURN PLATE	GD35-16	1
17	LIFTING HANDLE	GD35-17	1
18	BUSHING	GD35-18	1
19	TENSION WHEEL	GD35-19	1
20	STRAP GUIDE	GD35-20	1
21	SHAFT	GD35-21	1
22	PIN	GD35-22	1
23	SPRING	GD35-23	1
24	GRIPPER	GD32A-5	1
25	SCREW	GD32A-36	1
26	SLIDE-BEARING	GD32A-48	1
27	WASHER	GD32A-52	1
28	TENSION HANDLE	GD36- 18	1
29	DISK	GD36-35	2
30	TENSION SHAFT	GD36-37	1
31	CATCH PAWL	GD36-38	4
32	SPRING	GD36-39	4
33	CONNECT WASHER	GD36-40	1
34	DRIVER	GD36-41	1
35	NEEDLE BEARING	B2-2012	1
36	KEY	K2-4-16	1
37	NUT	N1-M5	1
38	PIN	P1-410	3
39	PIN	P1-2516	50
40	PIN	P1-425	1
41	PIN	P1-520	1

№.	НАИМЕНОВАНИЕ	КОД ДЕТАЛИ	КОЛ-ВО
42	PIN	P1-620	3
43	PIN	P2-306	2
44	PIN	P2-612	2
45	PIN	P2-816	2
46	SAFETY DISC	R1-10	1
47	SECURITYRING	R2-21	1
48	SCREW	S1 -M3-08	6
49	SCREW	S1 -M4-08	1
50	SCREW	S1 -M4-10	4
51	SCREW	S1 -M8-20	4
52	SCREW	S2-M5-08	1
53	SCREW	S2-M5-16	1
54	SCREW	S2-M10-10	1
55	SCREW	S3-M4-10	2